



Generation Two Heat Pump Fan Coil Units

MODEL CDIX-E (VRF OR 1:1 SPLIT) 350-1200 CFM

With “A” Coil and High Efficiency Integral ERV

DX HEATING/ COOLING with ELECTRIC HEAT



Introducing Climetec’s NEW Gen 2 Vertical High Rise Fan Coil units. These units are built with a higher degree of efficiency and greater thermal recovery. The Gen 2 units are perfect for use in high rise condos, apartments, Long Term Care Units, and hotels.

The unit will arrive fully assembled. All units are crafted with AHRI Certified ERV cores. All of our vertical fan coils meet the requirements of UL 1995/ CSA 22.2 #236- Standard for Safety heating and cooling equipment. Each unit is manufactured using high quality 18-gauge steel and is fully insulated with closed cell flexible elastomeric foam insulation. Each unit is crafted with Industry Standard Electronically Commutated Fan Motors (ECM). The access panels are designed for easy access for maintenance. Each unit is equipped with a standard MERV 8 filter.

Optional Unit Additions:

- Double deflection supply air grille with opposed blade dampers
- 7 day programmable 3 speed wifi accessible thermostat
- Optional freeze protection package, flood protection package, drain pan overflow switch, BTU meter available
- Raised bases available
- MERV filters can be upgraded to MERV 11 or MERV 13

FOR MORE INFORMATION PLEASE VISIT [WWW.HTTPS://CLIMETECMANUFACTURING.CA/](https://climetecmanufacturing.ca/)

CONTACT US AT P: 905-660-0700 E: info@climetec.ca

161 Milani Blvd, Vaughan, Ontario, Canada

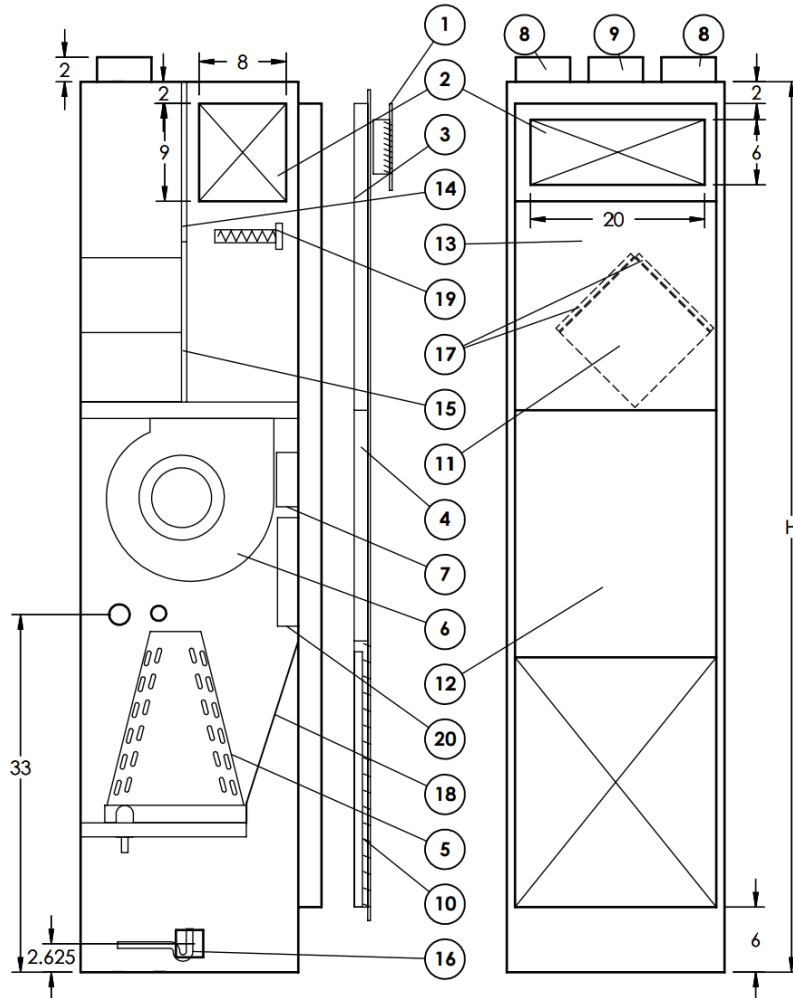
Copyright 2018 climetec



Generation Two Heat Pump Fan Coil, VRF or 1:1 Split Model CIDX-E, 350-1200 CFM

With "A" Coil and High Efficiency Integral ERV

DX Cooling / Heating with Electric Heat



1. Supply Air Grille
2. Optional Side, Front or Top Opening
3. Upper Access Panel
4. Lower Access Panel
5. DX Coil (with or without TXV)
6. Fan Motor
7. Electrical Box
8. Exhaust Air Intake / Discharge
9. Fresh Air Intake
10. Return Air Filter
- 11. AHRI Certified Removable ERV Core (12"x12"x9.3")**
12. Inner Lower Access Panel
13. Inner Upper Access Panel
14. ERV Motor Access Panel
15. ERV/HRV Air Filter
16. P-TRAP
17. ERV/HRV Air Filter
18. Air Channel
19. Optional Auxiliary Electrical Heater up to 1.5kw@120v, 3.5kw@208v
20. Optional VDR/DLS Controls

UP TO 86% SENSIBLE EFFECTIVENESS ON HEATING & UP TO 80% SENSIBLE COOLING FOR LOW SPEED

Performance Range

Air Volume

Fan Coil - 350 to 1200 CFM @ 0.5 ESP

ERV - 50 to 120 CFM up to 1.0 ESP

Thermal Performance

Fan Coil - Nominal ¼ to 3 ton Cooling

Nominal 15 MBH to 84 MBH Heating

ERV - Enthalpic Core up to 76%

Cooling, 82% Sensible Heating at 64 CFM

| Weight & Dimensional Data | | | | | |
|---------------------------|-----|-----|-----|------------------------|--------|
| Unit Size CFM-Ton | A | B | H | Return Air Filter size | Weight |
| 350 - .75T | 24" | 20" | 84" | 24"X24"X1" | 244lb |
| 450 - 1.0T | 24" | 20" | 84" | 24"X24"X1" | 244lb |
| 650 - 1.5T | 24" | 20" | 84" | 24"X24"X1" | 250lb |
| 800 - 2.0T | 24" | 20" | 84" | 24"X24"X1" | 262lb |
| 1000-2.5T | 24" | 20" | 84" | 24"X24"X1" | 286lb |
| 1200-3.0T | 24" | 20" | 84" | 24"X24"X1" | 286lb |

