

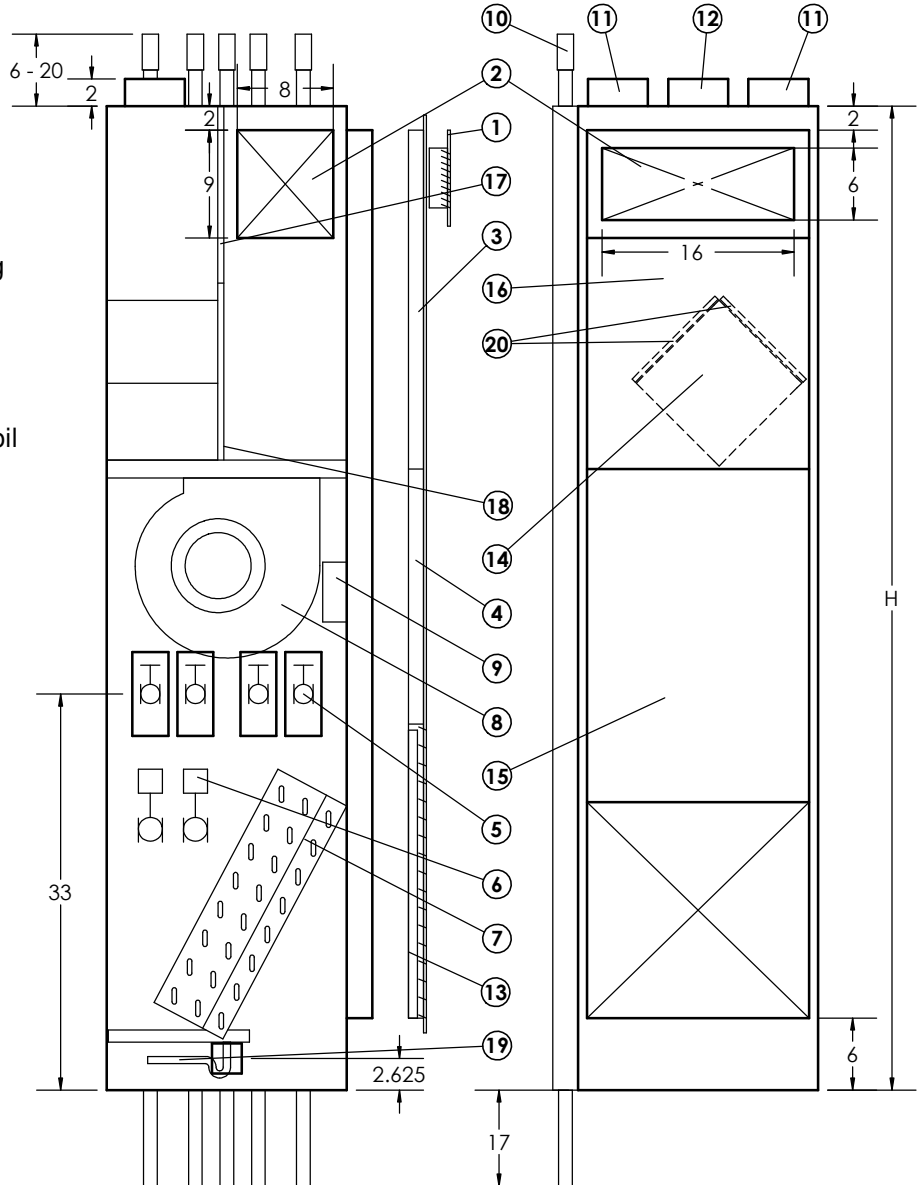
4 PIPE FANCOIL

Model CIS - 350~1200 : Chilled and Hot Water

Coil Options:

- 4 Row Chilled Water, 2 Row Hot Water

1. Supply Air Grille
2. Optional Side, Front or Top Opening
3. Upper Access Panel
4. Lower Access Panel
5. Supply & Return Shut off Valve
6. Cooling / Heating Actuator
7. Combined Chilled and Hot Water Coil
8. Fan Motor
9. Electrical Box
10. Swaged Riser Connection
11. Exhaust Air Intake/Discharge
12. Fresh Air Intake
13. Return Air Filter
14. Removable ERV/HRV Core
15. Inner Lower Access Panel
16. Inner Upper Access Panel
17. Motor Access Panel
18. ERV/HRV Core Access Panel
19. P-Trap
20. ERV/HRV Air Filter



Performance Range

Air Volume

Fan Coil - 350 to 1200 CFM @ 0.5 ESP

ERV - 50 to 120 CFM up to 1.0 ESP

Thermal Performance

Fan Coil - Nominal ¾ to 3 ton cooling

Nominal 15 MBH to 84 MBH heating

ERV- Enthalpic core 85% cooling, 75% sensible heating

Dimensional Data				
Unit Size	A	B	H	Return Air Filter size
350	20"	20"	82"	24"X20"X1"
450	20"	20"	82"	24"X20"X1"
650	20"	20"	82"	24"X20"X1"
800	20"	20"	82"	24"X20"X1"
1000	20"	20"	82"	24"X20"X1"
1200	20"	20"	82"	24"X20"X1"

